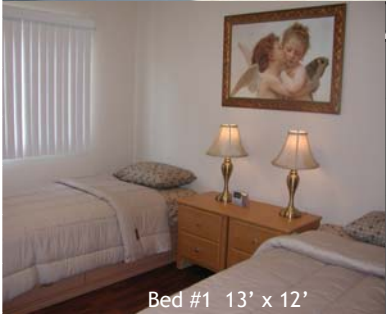




Front



Bed #1 13' x 12'

Alhambra Home Care
RCFE Facility # 415600595

Licensed for 6-Non-Ambulatory
Owned and Operated by an RN



Close to Kaiser,
Wallgreens, Seton
and Mills Peninsula
within 8 Mile Radius



Fireplace



Bed #2 14' x 14' with Private Bath

Our Mission is to provide the entire realm of assisted living to our residents. Our care and personal attention to each individual's particular needs will result in improvement in your loved one's quality of life.



Living Room



Bed #3 15' x 11'

Our objective is to meet the needs of all residents, including physical, emotional, and social. We will provide a continuity of care and recognize the need for dignity, self-esteem, and above all the desire in all of us to feel loved.



Dining Room



Kitchen



Backyard with Ramp Access to the Room



Family Room

Email: Alhambrahomemcare@yahoo.com
Please contact: Raquel Miranda RN Cell (650) 438-4468 • Rick Cell (510) 909-8922 • Office: (510) 799-9200
498 Alhambra Road • South San Francisco • CA 94080